



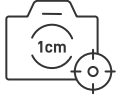
FJD Trion P2

LiDAR Scanner



SMALLER. SMARTER. SCAN MORE.

The next-generation FJD Trion P2 LiDAR Scanner combines groundbreaking portability with industrial-grade accuracy. Engineered for seamless field operations, it delivers centimeter-level precision, real-time colored point clouds, and multi-format deliverables—all in a compact 700g body. Whether mapping complex landscapes or capturing intricate details, the Trion P2 empowers professionals, surveyors, and 3D scanning enthusiasts to achieve more with less effort.



Up to 1cm
Relative Accuracy



70m
Scanning Range



< 1kg
Lightweight and Portable



4-Hour
Runtime



Real-Time
Colorization



Multi-SLAM
Algorithms

UNCOMPROMISED POWER

700g Ultra-Lightweight



Triple Data Transfer
(Type-C/USB/Wireless Network)



Standard RTK Setup



Three Built-In
Cameras



Upgraded CPU

High-Quality
Point Clouds



Wireless Network
Connection

Mobile Hotspot
Connection



4-Hour
Runtime

Dual-Battery
System

*Standard 67W Type-C Fast Charging



Metal Base for
Rugged Durability

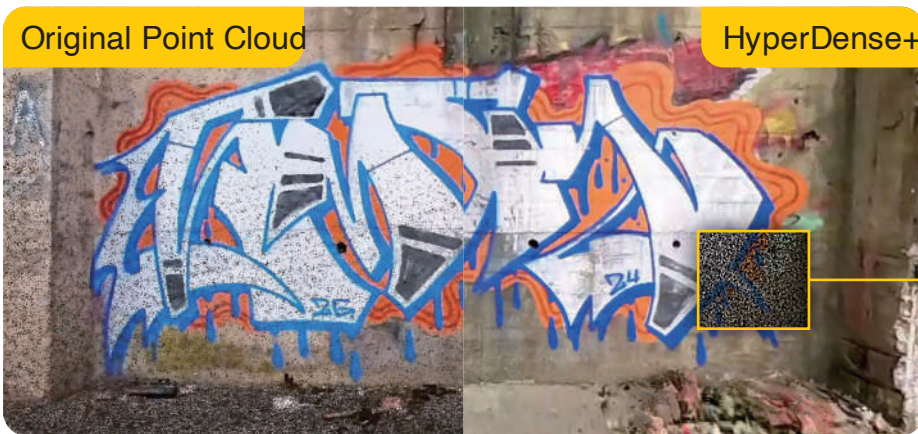
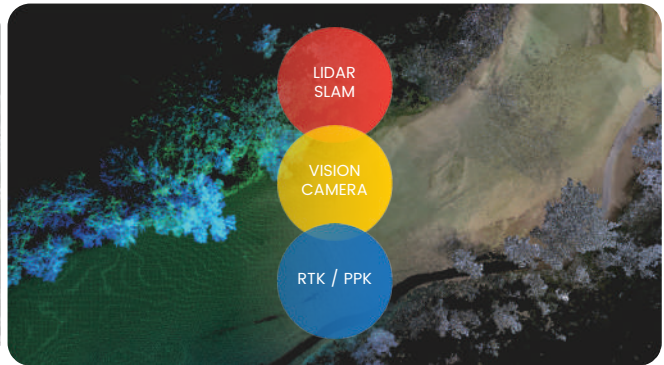
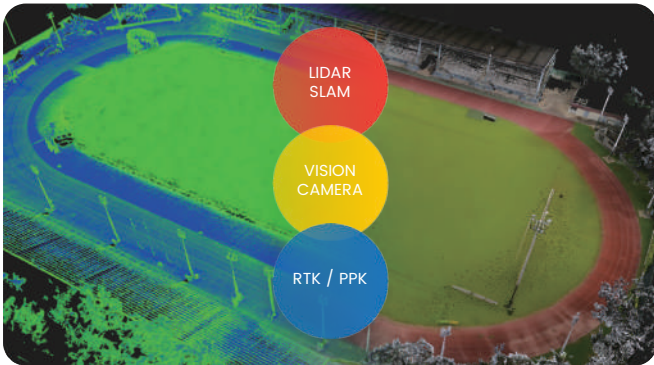


Seamless Pole
Mounting

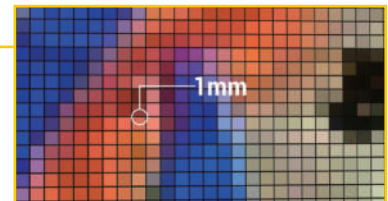
5/8" Standard Interface

MULTISLAM FUSION, ROBUST PERFORMANCE

Eliminate drift with hybrid constraints, even in featureless areas like beaches, tunnels, and parks.



With the HyperDense+ feature in the FJD Trion Model, it delivers 5-7x denser clouds in a spacing of up to 1mm, giving you better colorization and overall quality.



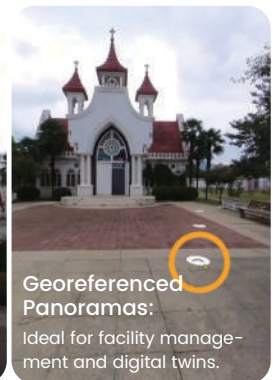
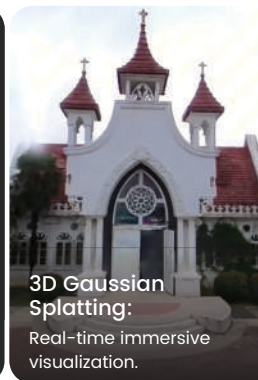
REAL-TIME TRUE-COLOR POINT CLOUDS

Enable real-time colorization and generation of high-quality point clouds through the upgraded CPU.



ONE SCAN, MULTIPLE DELIVERABLES

Maximize efficiency with multi-format deliverables from a single scan:



Seamless Integration into FJD Trion Software Ecosystem

Streamline the workflow from point cloud capture, data processing, to deliverable sharing, giving you a smooth project experience.



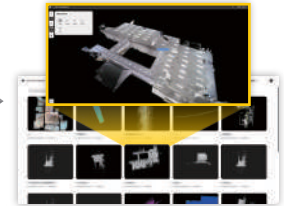
FJD Trion Scan
Data collection
Real-time app control
Scan file management



FJD Trion Model
Data processing
Generate construction, forestry, mining reports, and more



FJD Trion Model for Tablets
Generate Deliverables
iPad and Android support
On-site post-processing and preview



FJD Trion Explorer
Share and collaborate
Share online and support collaboration across teams.

SPECIFICATIONS

LiDAR

Speed	200,000 pts/s
FOV	360° x 59°
Range	40 m @ 10% reflectivity 70 m @ 80% reflectivity
Safety Level	Class 1, eye safety
Hyperdense+	Support
Continue Scanning	Support

Built-in Camera

FOV (Front Camera)	70°
FOV (Side Camera)	280° x 149°
Resolution (Front Camera)	2 MP
Resolution (Side Camera)	2 x 12 MP
Visual SLAM	Support
Image Export	Support
Image Format	.jpg

System Parameters

Dimensions	110 x 106 x 280 mm
Weight	700 g (excludes battery, external camera and RTK module) 1200 g (includes battery and RTK module) 1500 g (includes battery, external camera and RTK module)
Storage	512G (1TB expandable)
Operating Temperature	-20°C - 50°C
Storage Temperature	-40°C - 60°C
Ingress Protection	IP 54
Data Export	Wireless Network, USB Type-C, USB Flash Disk
Point Cloud Format	.las / .ply / .pts / .e57

Accuracy

Post-Processed Point Cloud Accuracy	Relative: ≤1 cm; Absolute: 3 cm
-------------------------------------	---------------------------------

*Lab-tested accuracy; actual results may vary

External Camera

Supported Models	Insta360 X3; Insta360 X5
360 Video Resolution (Insta360 X3)	F5.7K: 5760 x 2880 @ 30 / 25 / 24 fps
360 Video Resolution (Insta360 X5)	8K: 7680 x 3840 @ 30 / 25 / 24 fps

Electrical Specifications

Battery Life	4H (with 1 set of 2 batteries, include RTK module, exclude external camera) 3 H (with 1 set of 2 batteries, include RTK module and external camera)
Power Supply	DC Handheld Battery
Power Consumption	15 W (exclude external camera) 21 W (include external camera)
Charger	67W Fast Charging
Simultaneous Dual-Battery Charging	Support

GNSS

Satellite Constellation	BDS: B1I / B2I / B3I / B1C / B2a / B2b GPS: L1 C/A / L1C / L2P (Y) / L2C / L5 GLONASS: G1 / G2 / G3; Galileo: E1 / E5a / E5b / E6 QZSS: L1C/A / L1C / L2C / L5 (IRNSS and SBAS support by a firmware upgrade)
RTK Accuracy	H: 8 mm + 1 ppm RMS V: 15 mm + 1 ppm RMS
Positioning Rate	10 Hz
PPK	Support

Free Quote: sales.global@fjdynamics.com
Address: 15 SCOTTS ROAD #03-12, Singapore

FJDynamics.com



CREATE FOR A BETTER WORLD

Copyright © FJDynamics. All rights reserved.