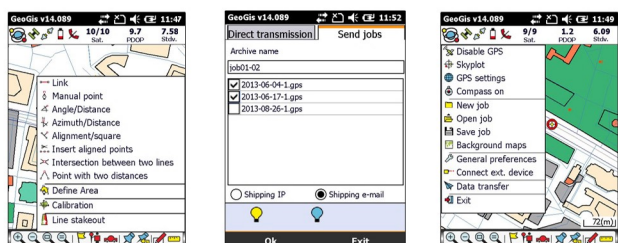
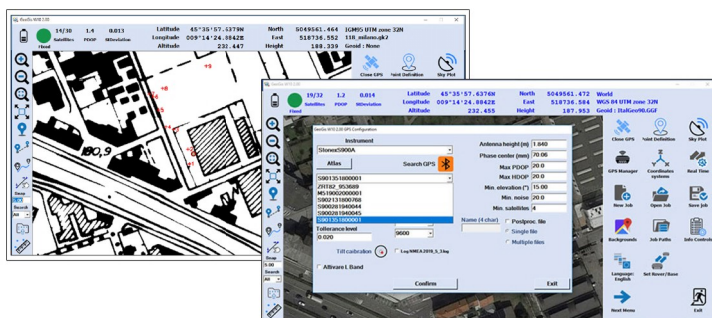


GeoGis and GeoGis^{W10} Windows Software

Stonex GeoGis and GeoGis^{W10} are powerful yet simple software solution for the collection of high quality feature and position data for GIS update and maintenance. GeoGis and GeoGis^{W10} software provide simple and efficient workflows to capture high quality data quickly and easily. GeoGis and GeoGis^{W10} are an option that can be embedded into handheld GIS systems.

The data collected in the field with GeoGis and GeoGis^{W10} can be process with Stonex Cube-manager software at office, this provides a complete solution for managing your data. With GeoGis and GeoGis^{W10} you never have to worry about which application to use to manage and transfer your data.

With GeoGis and GeoGis^{W10} software the workflow is straight and simple, from the field to the office and vice versa.



FEATURES



Stonex GeoGis software is developed for Windows Mobile and makes the field data collection fast and easy to do thanks to a full set of field-designed features, such as graphical map display, clear icon toolbar and useful calculation tools.

Stonex GeoGis software also makes it easy to incorporate digital photos into the data collection workflow using an handheld with integrated digital camera. Field workers can take and preview photos, attaching them to the features and create complete set of data for many different purposes.

With Stonex GeoGis software you can create custom data attributes and use them to assign values to the assets. Data forms can be pre-compiled basing on previously entered attribute values for maximum data collection efficiency.

Assets can be viewed on the intuitive graphical display, overlapped with raster and vector backgrounds, resulting in increased productivity and creating a more dynamic field worker experience.

Thanks to cellular and Wi-Fi capability GeoGis software can display online maps such as Google Maps, expanding the ability to find visual reference points anywhere on the planet. To inspect an asset, field workers can select the corresponding feature from the list or map, and the intuitive navigation tool of the GeoGis software will guide them to the asset's precise location.

With Stonex GeoGis software, you can collect data with the required level of accuracy, either in real time or after postprocessing.

Stonex GeoGis software is the right solution for collecting and maintaining high quality GIS data.



Stonex GeoGis^{W10} is a software for topographic survey dedicated to GIS (Geographic Information Systems) applications.

The ideal operating environment is a Windows 10 Tablet with GPS, camera, modem for a data SIM and a Bluetooth system to allow connection to all Stonex GNSS receivers.

It allows topographic precision surveying using connection to networks that offer RTK service, or rapid survey with metric/decimal accuracy.

Creating a survey file now it is simple, that allows data post-processing for better accuracy.

For every survey, descriptive information may be associated with the elements detected according to a database structure created by the user and/or one or more photographs.

The application allows a fly-over on georeferenced raster images or downloaded by Google in real time.

Topographic operations are summarized as:

- Topographic precision survey with RTK connection via SIM card or with the external GPS if this available
- Quick survey of metric/decimetric precision
- Survey of points, lines, areas and paths
- Stakeout of points detected or imported from files containing the coordinates
- Setting the most used reference systems and geoids in the world or localization in the field
- Tracking of graphically defined lines (bathymetry or similar operations)
- Export / Import of data in the most used formats in topographic surveys/GIS (eg Shape file).

GIS users are usually involved in data collection and applications but they are less familiar with methodologies and acronyms typical of GPS systems.

This is why GeoGis^{W10} offers to the user very clear and simple menus and an arrangement of survey functions with intuitive terminologies.

STONEX®
Part of **UniStrong**

Viale dell'Industria 53 - 20037 Paderno Dugnano (MI) - Italy
Phone +39 02 78619201
www.stonex.it | info@stonex.it