

CX Series 32-Channel LiDAR



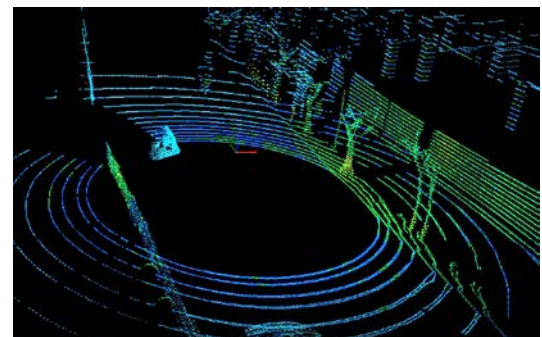
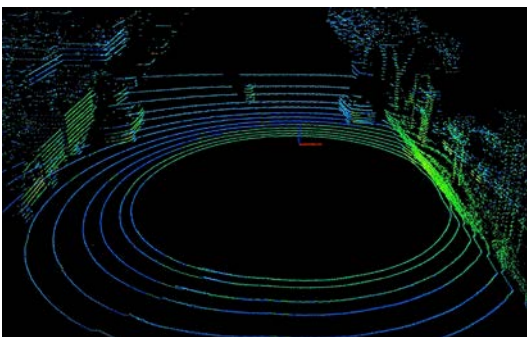
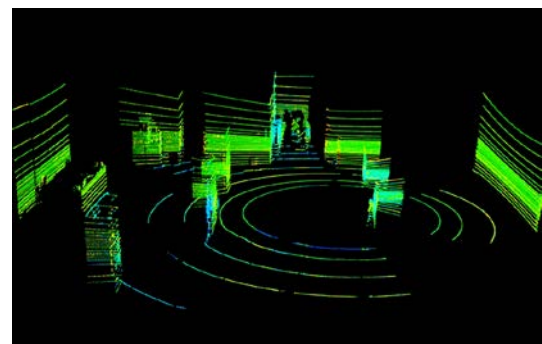
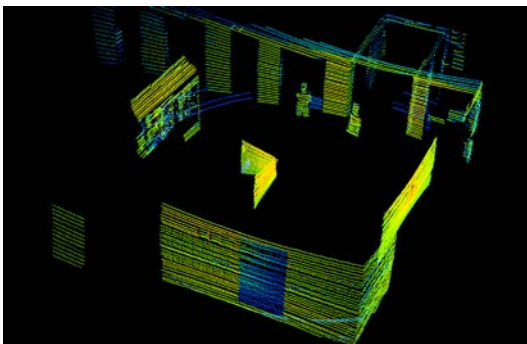
Abstract

CX Series 32-channel LiDAR achieves 360° 3D high-speed scanning, measurement range up to 200 m, $\pm 3\text{cm}$ accuracy, minimum vertical angle resolution up to 0.33° (C32), C32 widely used in autonomous vehicle, ADAS, smart transportation, service robots, logistics, surveying and mapping, security and so on.

Features

- High point density, capability of generating approximately 640,000 pts/s
- Wide field of view, with 360° horizontal FOV and 32° vertical FOV.
- Vertical angular resolution up to 0.33° , focused on front area data acquisition.

Demo



Specifications

Model		C32	
Channel		32	
Measurement Technique		Time of Flight(TOF)	
Wavelength		905nm	
Laser Product Classification		Class 1 Eye-safe/ IEC 60825-1:2007 & 2014	
Measurement Range		70m / 120m /150m / 200m	
Ranging Accuracy		±3cm	
Data Points Generated		600,000 pts/s	
Rotation Rate		5Hz, 10Hz, 20Hz (optional)	
Field of View (FOV)	Horizontal	360°	
	Vertical	-16°~ 15°	-18°~ 14°
Angular Resolution	Horizontal	5Hz: 0.09° / 10Hz: 0.18° / 20Hz: 0.36°	
	Vertical	0.33° / 1°	
Operating Voltage		9V~ 36V DC	
Operating Temperature		-20°C ~60°C (Customized up to -40°C)	
Communication Interface		Ethernet, PPS	
Shock Test		500m/sec ² , last11ms	
Vibration		5Hz-2000Hz, 3G rms	
IP		IP67	
Dimension (D-H)		Φ120*110mm	
Weight		1600g	

CX Series 16-Channel LiDAR



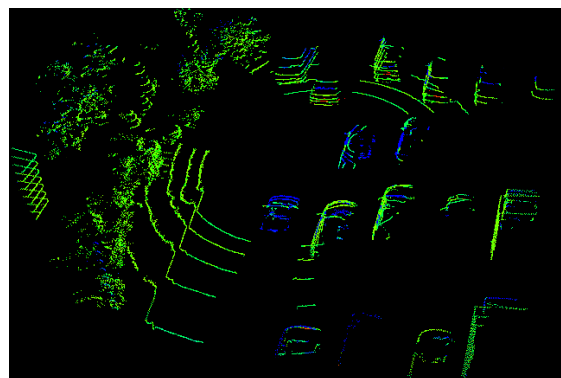
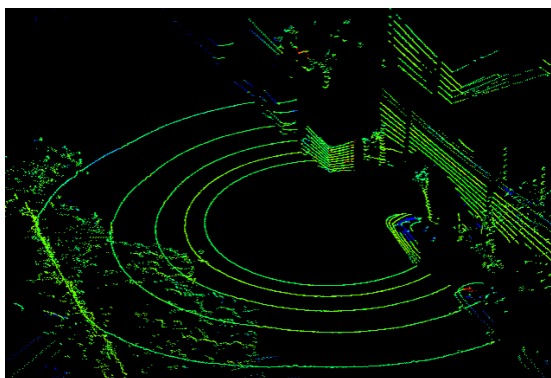
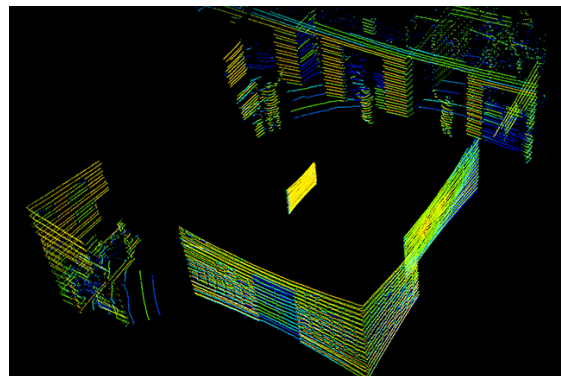
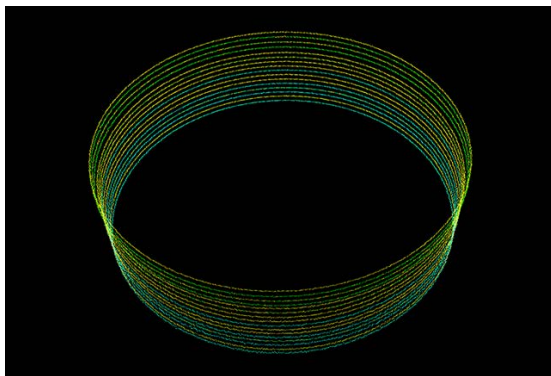
Abstract

CX Series 16 channel LIDAR achieves 360°3D high-speed scanning with 16-beam laser, measurement range up to 200 m, $\pm 3\text{cm}$ accuracy, up to 1.33° vertical angle resolution, widely used in autonomous vehicle, ADAS, smart transportation, service robots, logistics, surveying and mapping, security and so on.

Features

- High point density, capable of generating approximately 320,000 pts/s of 3D point cloud
- Wide field of view, with 360°horizontal FOV and 32°vertical FOV
- Compact size and light weight

Demo



Specifications

Model	C16	
Channel	16	
Measurement Technique	Time of Flight (TOF)	
Wavelength	905nm	
Laser Product Classification	Class 1 Eye-safe/ IEC 60825-1:2007 & 2014	
Measurement Range	50m / 70m / 120m / 150m / 200m	
Ranging Accuracy	±3cm	
Data Points Generated	320,000 pts/s	
Rotation Rate	5Hz, 10Hz, 20Hz(optional)	
Field of View (FOV)	Horizontal	360°
	Vertical	-15°~ 15°
Angular Resolution	Horizontal	5Hz: 0.09°/ 10Hz: 0.18°/ 20Hz: 0.36°
	Vertical	2°
Operating Voltage	9V~ 36V DC	
Communication Interface	Ethernet, PPS	
Operating Temperature	-20℃ ~60℃ (Customized up to -40℃)	
Shock Test	500m/sec ² , last11ms	
Vibration	5Hz-2000Hz, 3G rms	
IP	IP67	
Dimension (D-H)	102*81mm	
Weight	1000g	