

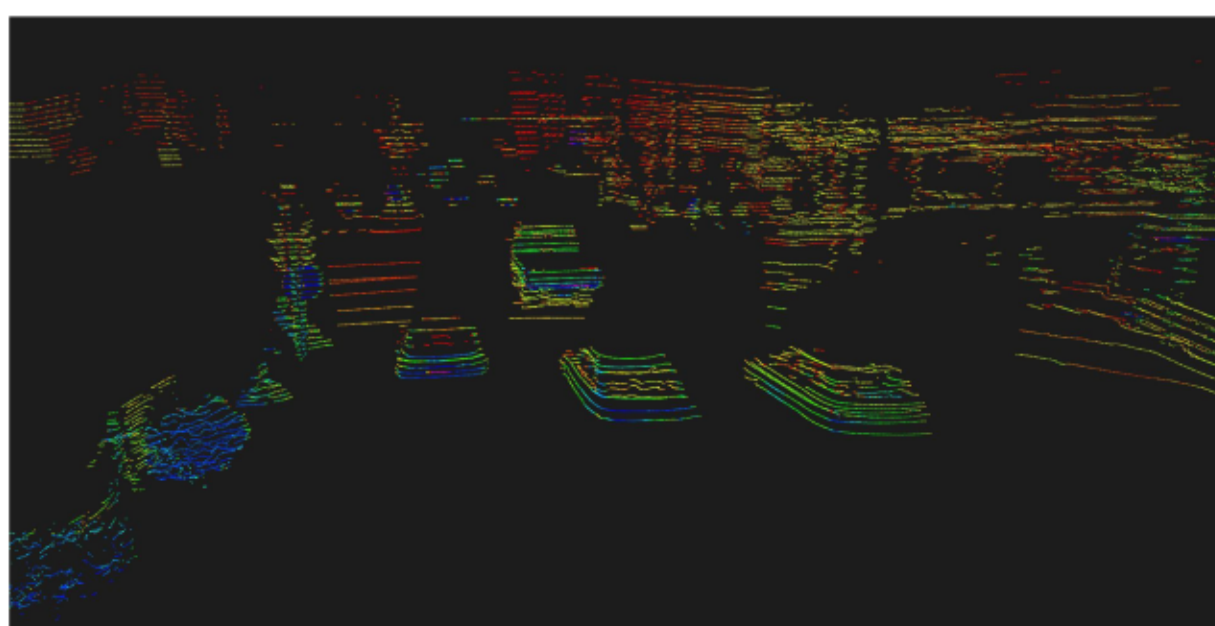
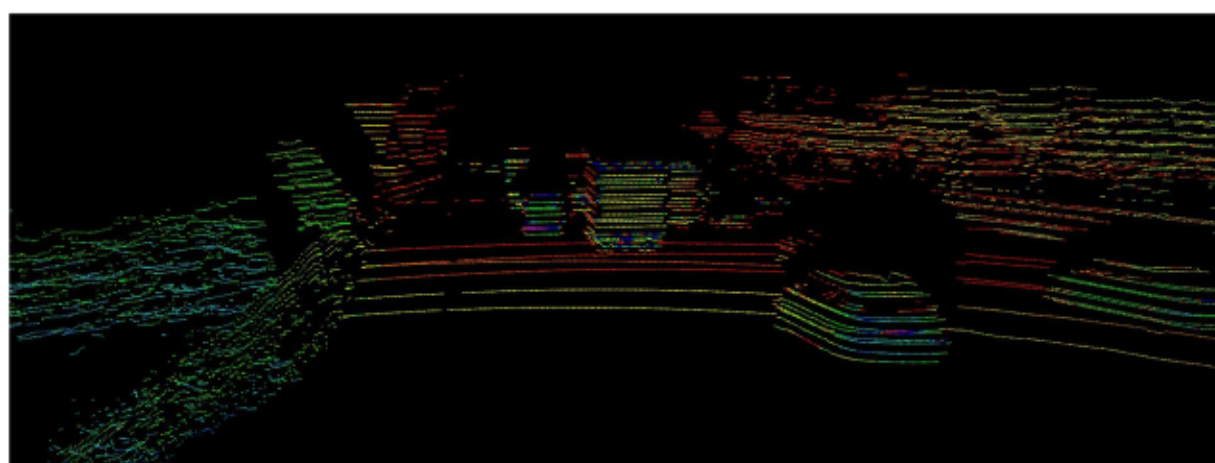
CH Series 32-Channel LiDAR



Abstract

CH Series 32-channel LiDAR is designed for Automotive Grade Standards to meet demands of L3- L5 autonomous cars, which can work with low-speed cars, V2X and long operation scenarios. It's the 1st one that officially passed auto-grade test in China.

Demo



Specifications

Model		CH32
Channel		32
Measurement Technique		Time of Flight (TOF)
Wavelength		905nm
Laser Classification		Class 1 Eye-safe / IEC 60825-1:2007 & 2014
Measurement Range		100m / 150m / 200m
Accuracy		±2cm
Data Points Generated		426,000 pts/s
Rotation Rate		5Hz, 10Hz, 20Hz(optional)
Field of View (FOV)	Horizontal	120°
	Vertical	-6.67°~ 4.58°
Angular Resolution	Horizontal	5Hz: 0.045° / 10Hz: 0.09°/ 20Hz: 0.18°
	Vertical	Vertical angle resolution between 0 ~ 0.81 °, minimum 0.09 ° in the middle and a maximum of 0.47 °
Operating Voltage		9V~36V DC
Operating Temperature		-20°C ~ 65°C(industrial grade) ; -40°C ~ 85°C(auto-grade)
Communication Interface		100M Ethernet, PPS
Power Consumption		10 W
Shock Test		500m/sec ² , last 11ms
Vibration		5Hz-2000Hz, 3G rms
IP		IP67
Weight		1.5Kg
Dimension (L·W·H)		155 * 107.5 * 90mm