



# Cube-scan

## Easy to use and versatile

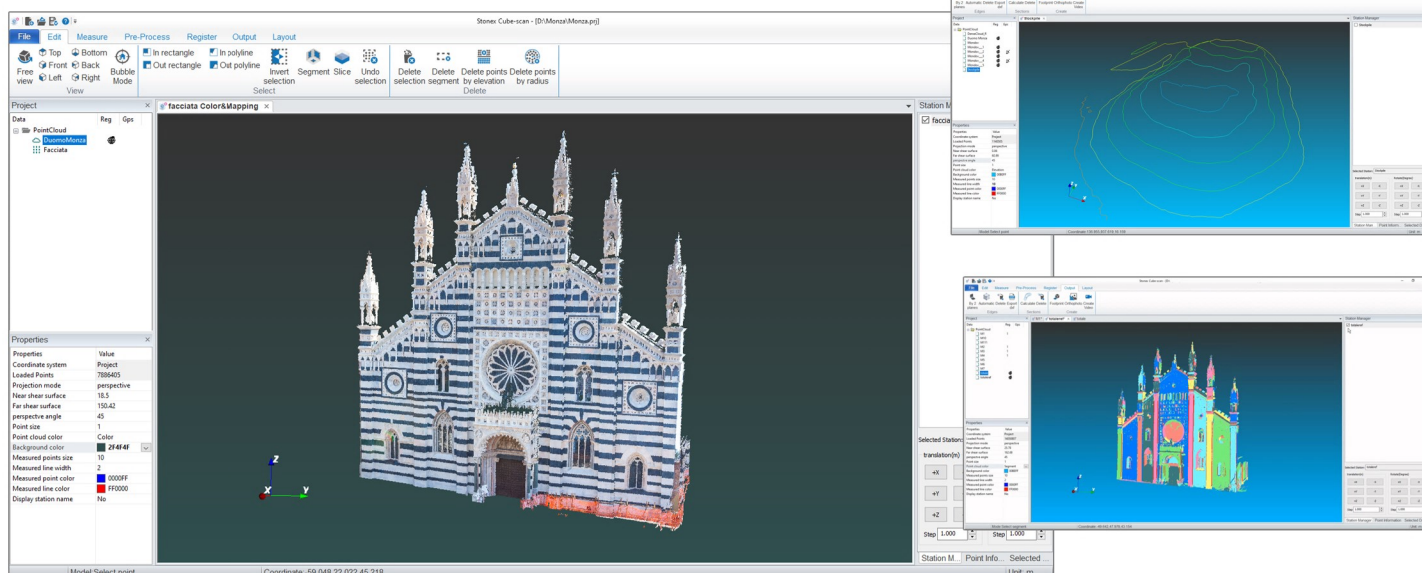
Cube-scan is part of Stonex Cube-suite.

Easy to use and learn, it allows basic 3D workflows. Import point clouds from Stonex scanner or different sensors and clean them through selection tools.

Aligns the point clouds by choosing from a variety of registration modes. Export registered point clouds to work with your own software or process measures, contour lines, edges and orthophotos.

### Minimal requirements:

- System: Windows
- CPU: I7 4 core processor
- Hard disk: 500 GB
- Memory: 16 GB



## Cube-scan FEATURES

Direct X300 data import	•
Automatic point cloud coloring (X300 internal digital cameras)	•
STONEX F6 handheld scanner importing	•
Total Station and GPS data import	•
Point clouds importing and exporting	•
Point cloud filtering and editing	•
Intersect Point clouds	•
Point cloud segmentation	•
Contours	•
Point cloud slice	•
Point cloud color editing	•
Orthophoto	•
Area Calculation	•
Adjust model vertical direction	•
Point cloud edge detection	•
Distances and annotations	•
Export to CAD	•
3D Model Fly-through video	•
Point clouds importing and filtering	•
Geo-referencing	•
Scans alignment per groups	•
Cloud to cloud best fitting alignment	•
Automatic target-free alignment	•
Station redirection	•
USB DONGLE for license	•

Illustrations, descriptions and technical specifications are not binding and may change

STONEX AUTHORIZED DEALER

**STONEX®**  
Part of **UniStrong**

Viale dell'Industria 53 - 20037 Paderno Dugnano (MI) - Italy  
Phone +39 02 78619201  
[www.stonex.it](http://www.stonex.it) | [info@stonex.it](mailto:info@stonex.it)