

SPECIFICATIONS

Satellite Signals Tracked Simultaneously		
Signal tracking	600 channels BDS B1,B2,B3 GPS L1C/A,L1C,L2C,L2E,L2P,L5 GLONASS L1C/A,L1P,L2C/A,L2P,L3 QZSS L1C/A,L1 SAIF, L1C,L2C,L5,LEX SBAS L1C/A,L5 Galileo Glove-A and Glove-B, E1, E5A, E5B, E5AtBOC, E6 MSS L-Band: Preserved	
GNSS features	Positioning output rate: 1Hz~50Hz Initialization time: <10s Initialization reliability: >99.99%	
Positioning precision		
Code differential GNSS positioning	Horizontal: $\pm 0.25\text{m}+1\text{ppm}$	Vertical: $\pm 0.50\text{m}+1\text{ppm}$
SBAS positioning	Typically<0.5m 3DRMS	
High-Precision Static	Horizontal: $\pm 3\text{mm}+0.1\text{ppm}$	Vertical: $\pm 3.5\text{mm}+0.4\text{ppm}$
Static and Fast Static	Horizontal: $\pm 2.5\text{mm}+0.5\text{ppm}$	Vertical: $\pm 5\text{mm}+0.5\text{ppm}$
UHF RTK	Horizontal: $\pm 8\text{mm}+1\text{ppm}$	Vertical: $\pm 15\text{mm}+1\text{ppm}$
Network RTK	Horizontal: $\pm 8\text{mm}+0.5\text{ppm}$	Vertical: $\pm 15\text{mm}+0.5\text{ppm}$
RTK initialization time	2~8s	
User interaction		
Operating System	Linux	
Buttons	Double Button Operation	
Indicators	Four Indicator Lights	
Web UI	Freely configure and monitor the receiver by accessing to the web server via Wi-Fi or USB	
Voice guide	iVoice intelligent voice technology provides status and voice guide Supporting Chinese, English, Korean, Russian, Portuguese, Spanish, Turkish and user defined language Providing secondary development kit	
Secondary development		
Hardware performance		
Dimension	130mm(Diameter)x85.3mm(Height)	
Weight	820g	
Material	Magnesium aluminum alloy shell	
Operating	-45°C~+70°C	
Storage	-55°C~+85°C	
Humidity	100% Non-condensing	
Waterproof	IP67 standard, protected from short time immersion to depth of 1m	
Dustproof	IP67 standard, fully protected against blowing dust	
Shock and vibration	Withstand 2 meters pole drop onto the cement ground naturally	
Battery	6800mAh, Li-ion battery built in, 7.4V	
Battery life	10-14hours (Supporting external battery)	
External DC Power	9-28V	
Communications		
I/O port	5PIN LEMO external power port+RS232, 7PIN external USB(OTG)+Ethernet 1 radio antenna interface	
Wireless modem	Built-in radio 1/2/3W	
Frequency Range	410-470MHz	
Communication Protocol	TrimTalk450s, TrimMark3, SOUTH (KOLIDA)	
Double Module Bluetooth	BLEBluetooth 4.0 standard, support for android, ios cellphone connection Bluetooth 2.1+EDR standard, able to transmit and receive RTK correction data in Base-Rover mode.	
NFC Communication	Realizing close range (shorter than 10cm) automatic pair between receiver and controller (controller equipped NFC wireless communication module needed)	
External Devices	Optional external GPRS/EDGE dual-mode communication module, switchable; allow to connect external WLAN card	
WIFI		
Standard	802.11 b/g standard	
WIFI Hotspot	The WIFI hotspot allows smart mobile terminal to connect and access to the internal webserver to control and monitor receiver	
WIFI data link	To work as the datalink that receiver is able to broadcast and receive differential data via WIFI	
Data storage/ Transmission		
Data Storage	8GB SSD internal storage Support external USB storage (up to 32 GB) and automatical cycle storage Changeable record interval, up to 50Hz raw data collection	
Data Transmission	USB data transmission, supporting FTP/HTTP data download	
Data Format	Differential data format: CMR+, CMRx, RTCM 2.1, RTCM 2.3, RTCM 3.0, RTCM 3.1, RTCM 3.2 GPS output data format: NMEA 0183, PJK plane coordinates, Binary code, Trimble GSOFF Network model support: VRS, FKP, MAC, fully support NTRIP protocol	
Inertial sensing system		
Electronic bubble	Controller software displays electronic bubble, user can check leveling status of the centering rod real time	
Thermometer	Built-in thermometer sensors, features intelligent temperature control technology which can monitor and adjust the temperature of receiver in real time	

KOLIDA
Professional's Choice

SuperRTK K3

600 Channels, Smallest Full Function RTK Ever
Enhanced BEIDOU Signal Processing Ability
14 Hours Continuous Working
Web UI, Wifi, E-Bubble



KOLIDA
Professional's Choice

GUANGDONG KOLIDA INSTRUMENT CO., LTD.

Add: 7/F, South Geo-information Industrial Park, No.39 Si Cheng Road, Tian He IBD, Guangzhou 510663, China
Tel: +86-20-22139033 Fax: +86-20-22139032
Email: export@kolidainstrument.com market@kolidainstrument.com http://www.kolidainstrument.com

600 Channels Full constellations

K3 is equipped with a Kolida K800 series GNSS board which has 600 channels and is capable to support multiple satellite constellations: GPS, GLONASS, BEIDOU and GALILEO, SBAS, including the latest Beidou-3 system.

(The receiver has the ability to get RTK FIXED solution by using individually any of the existed satellite systems and not necessarily primarily use GPS system.)



Small As an Apple

The diameter of the K3 is only 13cm, height only 8.53cm, and the weight is only 820g. It is as small as an apple that you can even put it into your pocket.

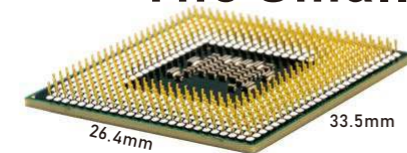
New Integration Technology New Level of Stability

GNSS antenna, Bluetooth, wifi module are integrated into one board, which helps to save the internal space of K3, making the signal better and performance more stable.

This design also can reduce multipath effect, help receiver to keep fixed solution under canopy and even work closely to buildings.



The Smallest UHF Radio in the History



The latest micro UHF module has high sensitivity and low power consumption.

Magnesium Aluminum Alloy Shell Is Shatter Resistant

K3 is able to withstand 2 meters pole drop onto the cement ground naturally and fully protected against blowing dust.



Energized Battery Increased Working Time

4 hours quick charge is enough to enable K3 a 14 hours of using time.

Other Features

Linux OS	Web UI	WIFI	Electronic Bubble
410-470MHZ Radio	8G SSD Storage	OTG FIELD DATA DOWNLOAD	NFC
Bluetooth 4.0+2.1	Mobile Reference Station (WIFI)		

New Case, More Portable



The light weighted case for K3 is stable and wear resistant.

Data Collector. Simply Trustable



T17N

- Windows Mobile 6.5
- 1Ghz CPU, RAM 512MB
- 1GB ROM, Extendable to 32GB
- 3.7V, 6500mAh removable Li-ion
- 3.7 Inch, 480X640VGA
- WCDMA
- Include EGSTAR3.0



H3PLUS

- Android 6.0
- Quad-core 1.3GHz CPU, 2GB RAM
- 4.3 Inches, WVGA 800X480dpi
- 8 megapixel camera with auto focus
- 6500mAh, up to 10Hours
- Dual SIM Card
- 4G FDD TDD network, 3G WCDMA
- GPS\GLONASS\SBAS\A-GPS
- Include EGSTAR

New app. New Productivity

SurvX Android

Windows CE data controller is too old technology? No problem. Simply download SurvX App on your smart phone or tablet. Enjoy the smooth operation of Android platform !



Seamless Connection

- NFC
- Saving-Time Bluetooth Search
- Auto Connection

Intuitive interactive design

- Reducing mistakenly touching
- User define program menu
- Signal strength graphic display

Rich & Practical Programs

- CAD function & Line work
- 3D display mode
- Road & Power line program

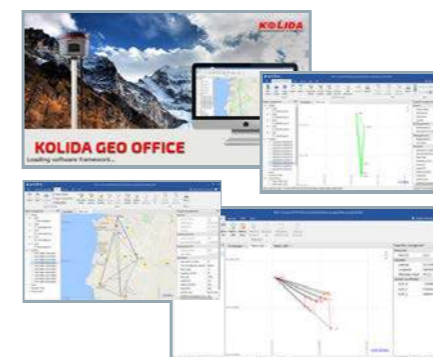
Creativity

- Saving & Sharing coordinate system by QR code
- Data recovery & Encryption function
- Support Google map and other base map

Post-processing SW. Free of Charge

KOLIDA GEO Office

Integrates static data processing and kinematic data adjustment



Intelligent

- Antenna manager with popular receiver types.
- Fast processing and clear display
- Manually edit and filter satellite data for best result
- Update online.

Versatile

- Compatible with numerous data format.
- Export abundant types of report.
- Transformable to RINEX format